

EXTERNAL LIGHT SOURCES FOR STEREOMICROSCOPES

PROFESSIONAL
MEASURING



2020

KERN Pictograms



360° rotatable microscope head



Monocular Microscope
For the inspection with one eye



Binocular Microscope
For the inspection with both eyes



Trinocular Microscope
For the inspection with both eyes and the additional option for the connection of a camera



Abbe Condenser
With high numerical aperture for the concentration and the focusing of light



Halogen illumination
For pictures bright and rich in contrast



LED illumination
Cold, energy saving and especially long-life illumination



Incident illumination
For non-transparent objects



Transmitting illumination
For transparent objects



Fluorescence illumination
For stereomicroscopes



Fluorescence illumination for compound microscopes
With 100 W mercury lamp and filter



Fluorescence illumination for compound microscopes
With 3 W LED illumination and filter



Phase contrast unit
For a higher contrast



Darkfield condenser/unit
For a higher contrast due to indirect illumination



Polarising unit
To polarise the light



Infinity system
Infinity corrected optical system



Zoom magnification
For stereomicroscopes



Parallel optical system
For stereomicroscopes, enables fatigue-proof working



Integrated scale
In the eyepiece



SD card
For data storage



USB 2.0 digital camera
For direct transmitting of the picture to a PC



USB 3.0 digital camera
For direct transmitting of the picture to a PC



WLAN data interface:
For transmitting of the picture to a mobile display device



HDMI digital camera
For direct transmitting of the picture to a display device



PC software
To transfer the measurements from the device to a PC.



Automatic temperature compensation
For measurements between 10 °C and 30 °C



Protection against dust and water splashes IPxx
The type of protection is shown by the pictogram.



Battery operation
Ready for battery operation. The battery type is specified for each device.



Battery operation rechargeable
Prepared for a rechargeable battery operation



Mains adapter
230V/50Hz in standard version for EU. On request GB, AUS or USA version.



Power supply
Integrated in microscope. 230V/50Hz standard EU. More standards e.g. GB, AUS or USA on request.



Package shipment
The time required to manufacture the product internally is shown in days in the pictogram.

Abbreviations

C-Mount	Adapter for the connection of a camera to a trinocular microscope
FPS	Frames per second
H(S)WF	High (Super) Wide Field (Eyepiece with high eye point for wearers of glasses)
LWD	Long Working Distance
N.A.	Numerical Aperture

SLR camera	Single-Lens Reflex camera
SWF	Super Wide Field (Field number at least \varnothing 23 mm for 10× eyepiece)
W.D.	Working Distance
WF	Wide Field (Field number up to \varnothing 22 mm for 10× eyepiece)

Why you should choose a KERN microscope now!

For 175 years, KERN & SOHN has been synonymous with high precision weighing and measuring technology. This claim is the driving force for the development of our microscope and refractometer ranges.

Thanks to consistent customer focus paired with smart ideas and the latest available technology we are proud to be suppliers of high-quality, durable top microscopes and refractometers, which help you to be as efficient as possible in your daily work.

When developing our microscopes we have concentrated on the very best optical quality and have used only high-quality glass and the latest technologies to achieve this. The high-quality Philips halogen and modern LED illumination produce razor-sharp images with high contrast and which will impress you with their brilliant true-colour display – you must have noticed this yourself.

Your advantages:

- all mechanical parts have been designed for a long service life
- special attention has been given to the ergonomics of our microscopes, as this allows the user to work for several hours in a comfortable position which does not cause fatigue
- our microscopes are fully-equipped and can be used immediately
- Highlight for 2020: die KERN camera software – you will be amazed at how user-friendly and intuitive it is, a high-quality tablet camera as well as a comprehensive range of calibration services for refractometers
- and much more...

Use our practical “Check list for microscopes and refractometers”, which may help you to quickly determine specifications for the future instrument. Together with our KERN product specialist you can choose the right product for you.

If there is no suitable product in the standard range, for example, then we will of course configure an individual microscope for you.

Our aim is to develop a market-driven product solution, so with our microscope and refractometer range, the saying holds true: good quality at a competitive price! This is what we stand for and work towards, every day!

With our current 2020 product range you can benefit from improved quality and a clear reduction in price, which we have been able to achieve through more efficient production methods and increased global sales of our microscopes and refractometers and of course we pass this straight on to you

Do you have any questions about our range of microscopes and refractometers?

Your KERN customer consultants are available at any time to help you further.

I hope that you enjoy working efficiently with our KERN Optics products.



Albert Sauter, Managing Director

Your advantages

fast

- 24 hour dispatch service for products in stock – order today, on its way tomorrow
- Sales & service hotline from 8:00 am to 5:00 pm

reliable

- Up to 3 years warranty
- Certified QM system
DIN EN ISO 9001

versatile

- One-stop shopping: from microscope through to refractometer – everything from one supplier
- Quick as a flash, find the product you want with the “Quick-Finder” at www.kern-sohn.com



Order hotline
+49 7433 9933-0



E-mail order
info@kern-sohn.com



www.kern-sohn.com
Information on current product availability, product data sheets, user instructions, useful knowledge, technical glossary and much for you to download, practical topic areas, which will guide you to the right product in your industry as well as a microscopes and refractometers search engine.



Service hotline
+49 7433 9933-199



Fax Order
+49 7433 9933-146



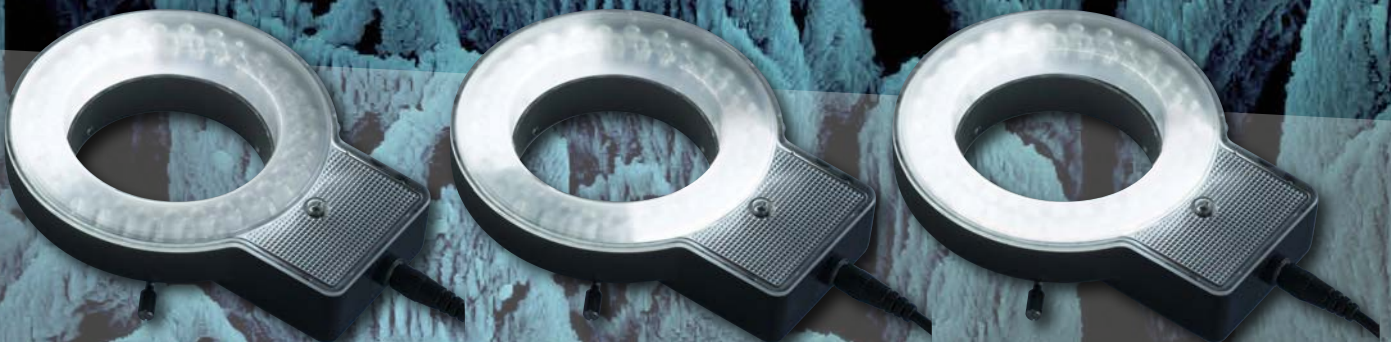
Online shop
www.kern-sohn.com



Our team of consultants will assist you
from Monday to Friday
from 8:00 am to 5:00 pm

7 External light sources for stereomicroscopes

Ring illumination and cold light sources



Professional illumination units guarantee outstanding, uniform and strong illumination

! These illumination units are also available with UK mains plug. For more information on this, visit our online shop or give us a ring



OZB-A4571



OZB-A4572



OBB-A6102



OZB-A7101

Features

- Choose your favourite external illumination here to achieve maximum flexibility and greatest possible ease of use in stereo microscopy
- These professional illumination units provide a quality of light at a high, constant intensity at all times
- Regardless of whether your choice is space-saving ring lights or cold light sources using optical fiber, our range is all you can wish for
- With the OZB-A7101 polarisation ring illumination unit, you also have an excellent component which has been specially optimised for observing shiny surfaces
- Naturally, these external illumination units also fit your standard stereo microscope
- Exception: The ring illumination units cannot be used in combination with the following ranges: OSE-1, OSF-4G, OZL-45R, OZC-5 and OZG-4

Model	Illuminance	Inner \varnothing	Colour temperature	Brightness adjustable	Illumination by segments	Polarising filter	Price excl. of VAT ex works €
KERN		mm	K				
OZB-A4571	3W-LED	60	7000 - 11000	✓			90,-
OZB-A4572	3W-LED	60	6500 - 7000	✓	✓		140,-
OBB-A6102	4,5W-LED	63	approx. 7600	✓			135,-
OZB-A7101	4,5W-LED	62	6500 - 7000	✓		✓	590,-

✓ = Included with delivery

○ = Option

Fiber illumination KERN OZB-IF



OZB-A4516



OZB-A4515



Application example

Features

- With the **OZB-A4516** 20 W-LED goose neck illumination unit with focusable light beam, you can adjust the illumination to suit your needs. Spot or scattered radiation means that you can achieve the very best illumination of your sample.

Model	Description	Length	Illuminance	Colour temperature	Brightness adjustable	Price excl. of VAT ex works €
KERN		mm		K		
OZB-A4515	Dual fiber LED unit	300	6W	5600 - 6300	✓	150,-
OZB-A4516	Dual fibre LED cold light source	540	20W	6400	✓	620,-

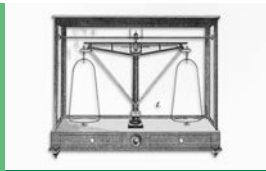
✓ = Included with delivery

○ = Option



1769

Ancestor Johann Jakob Sauter built the Hahn inclination scale out of iron, a foundation stone for weighing for the balance industry in Southern Germany



1844

KERN is founded – precision balances are produced



1863

A proud Gottlieb Kern with his staff



1880

Pharmaceutical balance with Aesculap



1923

Inflation – KERN wages are paid with self printed currency



1980

The electronic balance ousts mechanical devices



1994

Accredited DKD laboratory (ISO 17025)



2000

New premises in Balingen



2002

Existing QM system certification in accordance with DIN EN ISO 9001:2000 standards



2007

Approval for the manufacture of medical products (DIN EN 13485 and 93/42/EEC)



2008

Authorisation for initial verification by the manufacturer (2009/23/EC)



2009

Approval for the manufacture and sale of height rods (DIN EN 13485 and 93/42/EEC)



2012

Verification point for non-automatic balances and test weights.

New customer portal www.kern-sohn.com goes live



2014

Expansion of the product range to include optical instruments (microscopes and refractometers)



2015

Inauguration of Ziegelei 2.0 with computer-controlled high-bay warehouse



2017

Come with KERN into the digital future: Expansion of the model ranges compatible with Industry 4.0, as well as the related services



2019

Significant anniversary year! 25 years of accredited DKD laboratory 175 years of KERN & SOHN 250 years of balance manufacture in the Sauter family-owned company



2020

Construction of Ziegelei 3.0, extension of administration building